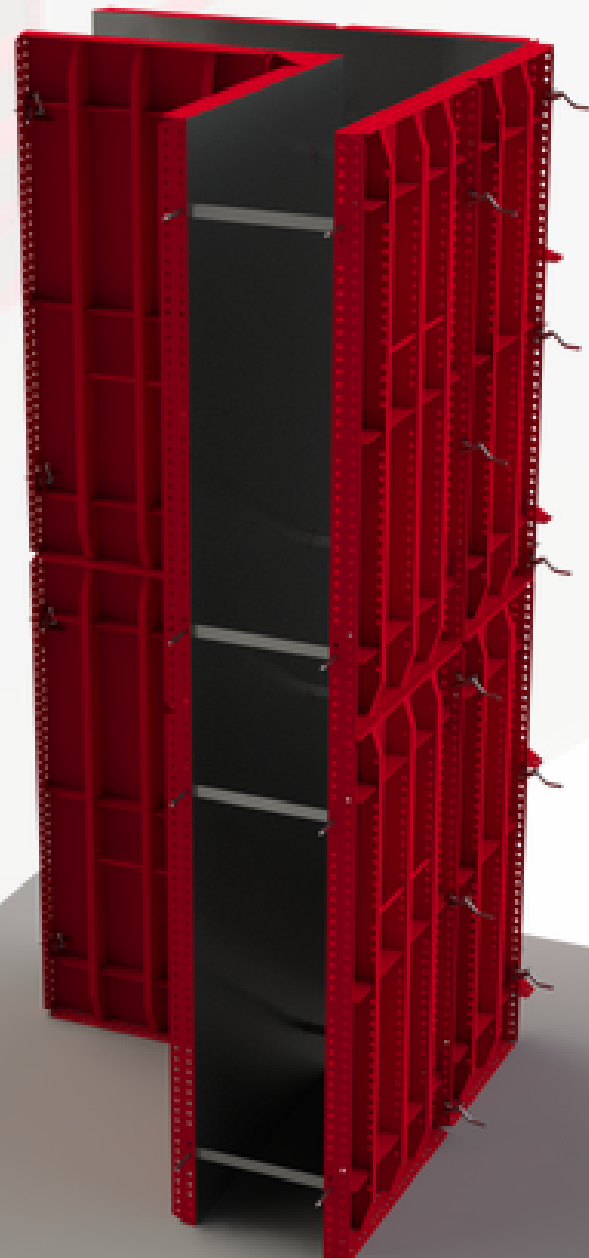


METCON

Metal y Construcción

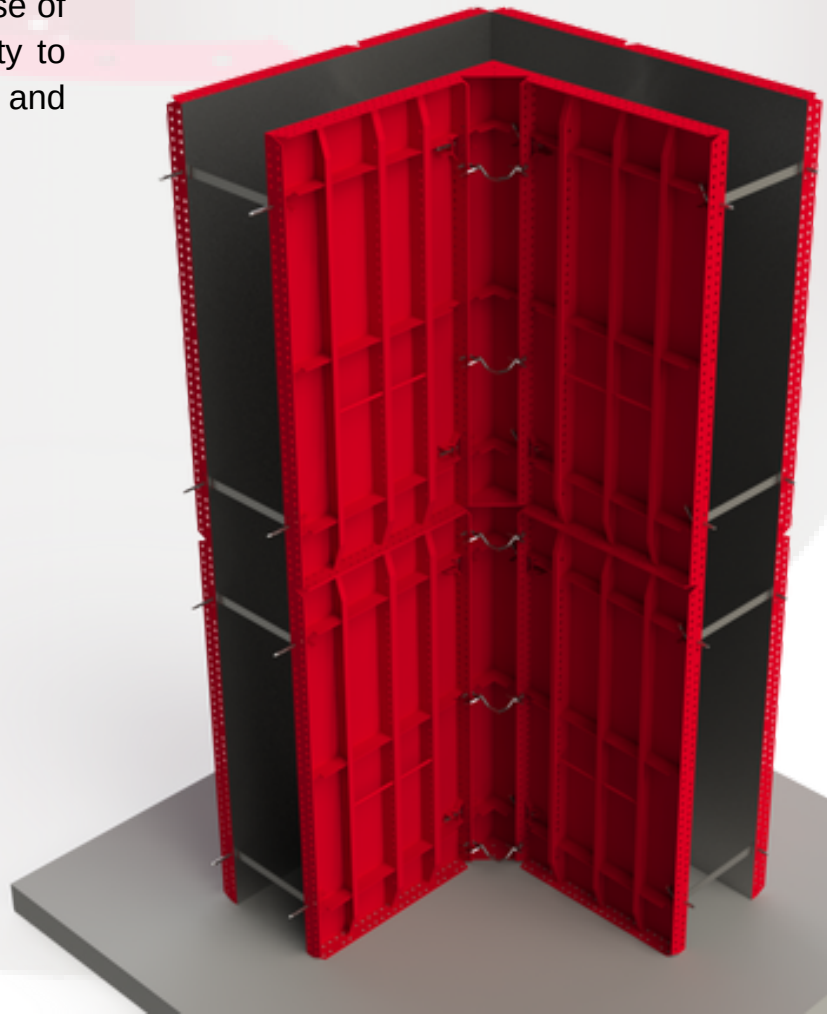
CONSTRUCTION LINE

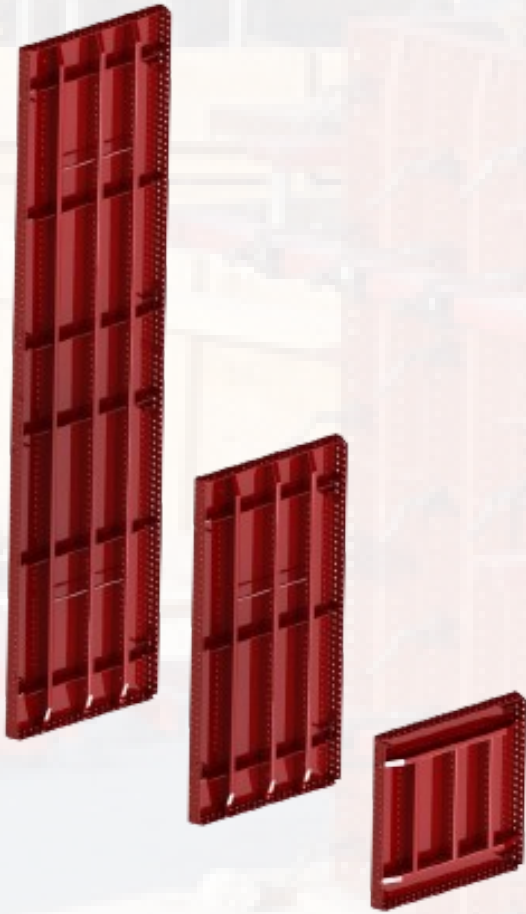


Conocimiento, creatividad y visión

ABOUT US?

We are a company born as an alternative for the metal-mechanical and Construction sector, with nationwide coverage dedicated to the Manufacture of construction equipment, assembly parts and metal-mechanical services for the industry in general. Supported by trained personnel, cutting-edge technology and adequate and safe facilities, always seeking efficient use of the company's resources and profitability to provide greater well-being to partners and collaborators.





METAL FORMWORK

Modular system for the formwork of walls, columns, retaining walls, slabs and all types of concrete structures.

Our system was designed and calculated using modern computerized systems , to guarantee a structure that is sufficiently rigid and resistant for intensive use on site, but at the same time guaranteeing light weight for easy manipulation by employees

ADVANTAGES



Due to its material, it is a very resistant system.



Industrialized process, which streamlines processes and increases performance



Modular assembly system that allows any use, columns, walls and slabs



TECHNICAL DATA

Weight: 32.3 Kg / M²

Contact face: 1/8"

Maximum pressure: Column from 300 to 1,800 mm 144 Kpa

Columns < 1,800 mm 96 Kpa

METAL FORMWORK FOR CIRCULAR COLUMN

The Circular Formwork for columns is completely manufactured in steel, this system is easy to assemble both vertically and horizontally using bolts, the steel ribs are designed to maintain the circular shape and simplify alignment, each column is finished with lifting rings and open washers to its disassembly.



We have a highly qualified engineering team

SPECIAL FORM LINE

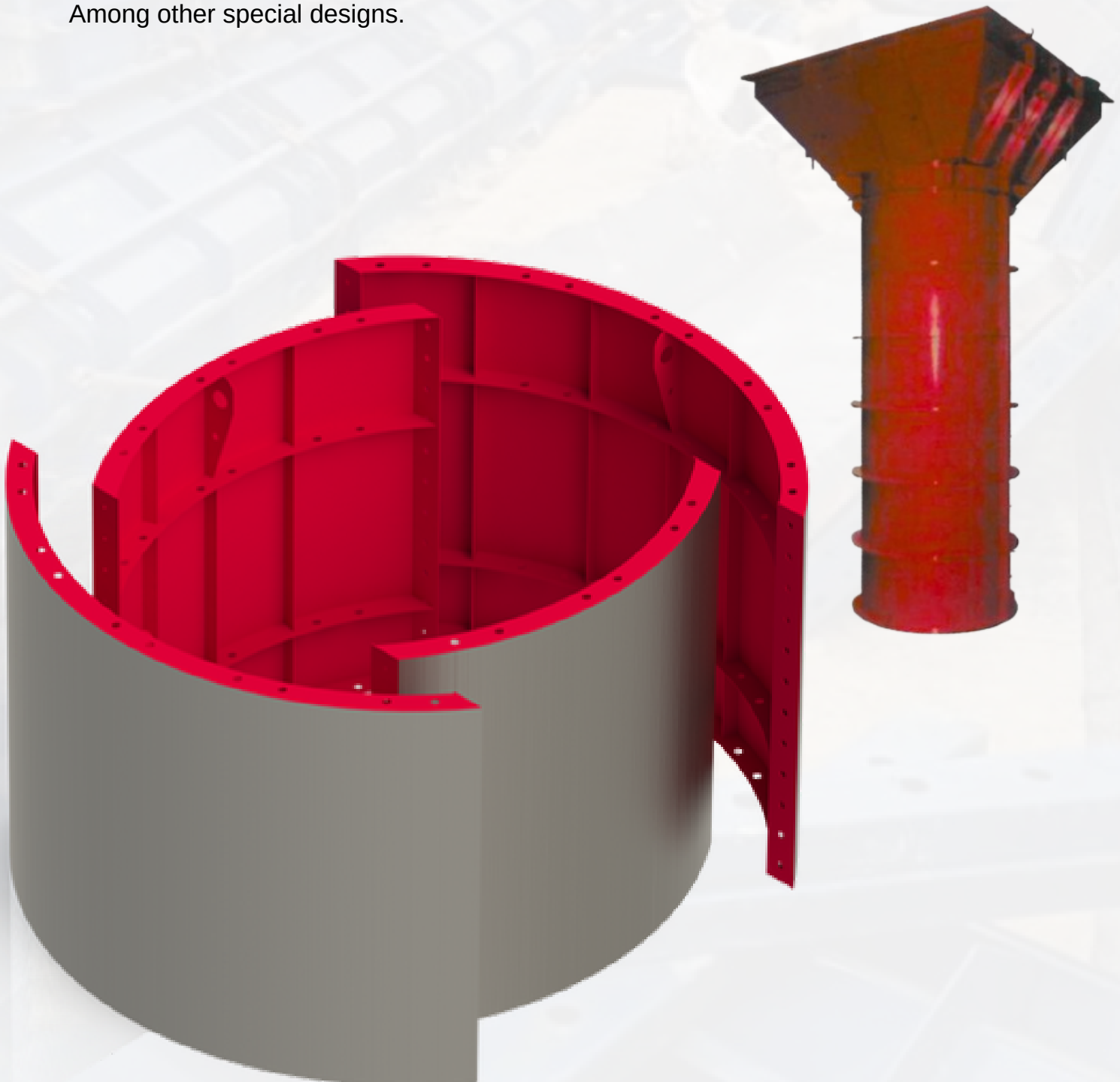
In addition to the equipment that we normally see in the market, at Metcon Colombia, we adapt to the needs of our clients, which is why we opened our line of special forms, such as:

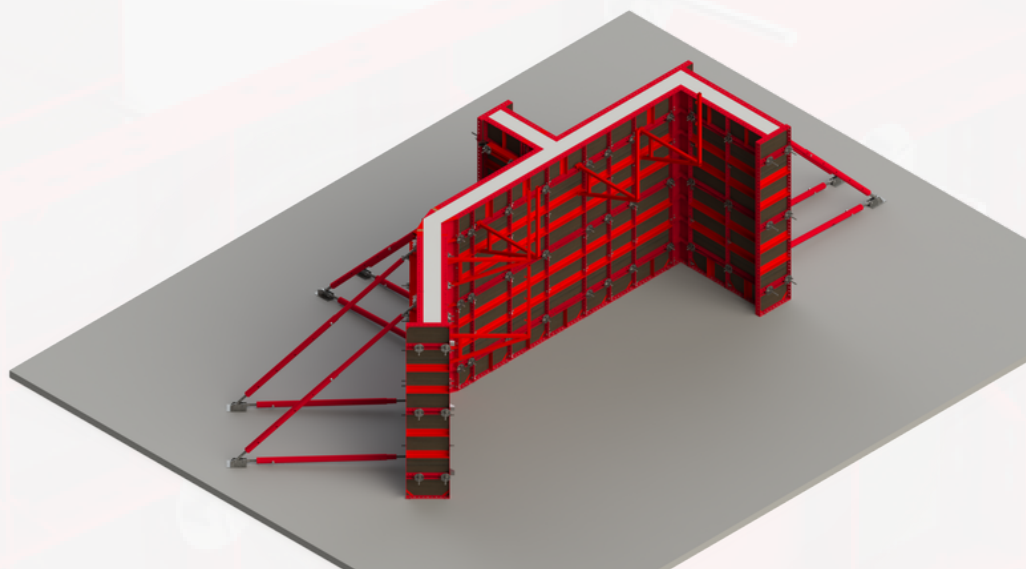
Caisson formwork

Formwork for prefabricated beams

Formwork for capital

Among other special designs.





METALPHENOLIC FORMWORK

Lightweight modular formwork, with a metal frame and high-resistance Phenolic surface for works in which the crane capacity is limited or must be manually formed, braced using Dywidag Bars which allow quick and precise assembly.

FORMALE ACCESSORIES

We have all kinds of accessories necessary for the optimized use of the equipment

STAPLE



CLAMP



SIMPLE PIN



TOOL BEAK



TENSOR



TOOL TUBE



EXTERIOR ANGLE



ALIGNER



INTERIOR ANGLE



- *We manufacture accessories tailored to the needs of each of our clients*

MULTIDIRECTIONAL SCAFFOLDING

It has 8 connections in one plane, automatic right angles, flexibility for other angles, and self-closing assembly



Connection details





CONVENTIONAL SCAFFOLDING

This scaffolding system is designed for light masonry work, it has an optimal weight, allowing easy handling.

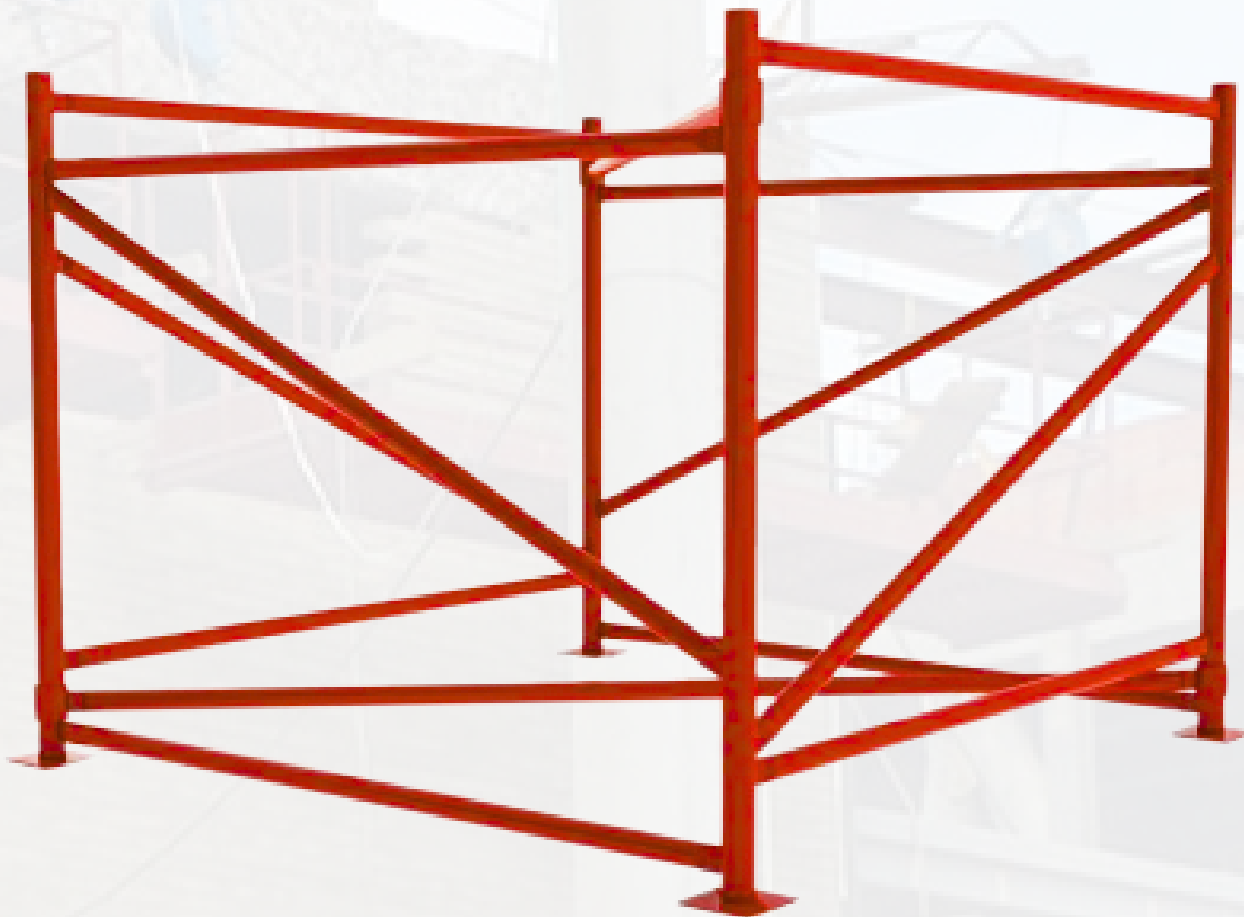




HANGING SCAFFOLD

Hanging scaffolding systems or variable level suspended platforms are characterized by providing solutions for light jobs carried out at high altitudes that, otherwise, are difficult to carry out and end up representing a high cost for the constructor.





LOADING SCAFFOLD

The loading scaffolds are manufactured from high-strength structural tubing. It is characterized by being a modular structure made up of non-deformable triangular elements, which allow rapid assembly of towers for vertical shoring



CONVENTIONAL EQUIPMENT

We manufacture construction equipment
such as:

Trusses

Parallel dowel

Test cylinders

cones

pavement rails

Among other equipment

METCON

Metal y Construcción

CONTACT US

📍 Cll 15 N 26 A 50, soledad / Atlántico

📷 @metconcolombia

☎ 312 3807937 / 310 3924080

✉ comercial@metconcolombia.com

www.metconcolombia.com

